



Specifications:

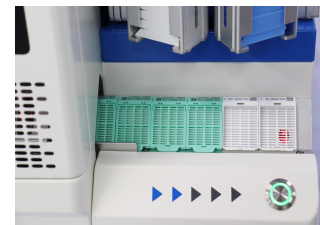
Dimensions (L x W x H):	20 x 12 x 15in. (510 x 300 x 366mm)
Weight:	66lbs.(30 kg)
Power requirements:	AC,90-240V, 50/60 Hz, 350 Watts
Laser model:	Ultraviolet laser
Laser power:	1 Watt
Working temperature:	59°F ~ 86°F (15°C ~ 30°C)
Work noise:	≤65dB
Connectivity:	USB2.0
Cassette printing speed:	< 3 seconds per cassette (on-demand printing)
High resolution:	500 DPI
Number of hoppers :	6 hoppers for cassettes with or without lids
Cassette capacity per hopper:	80 cassettes per hoppers
Total cassette capacity:	480 cassettes
Output tray capacity:	6 cassettes

Guangdong Jinqun Medical tissue cassette laser printer is a must-have for pathology and lab environments. Precision construction forges jam-free printing while its low work noise ≤65dB design offers ribbon or cartridge-free printing, optimal for cost-efficient workflows.

Easily integrated into laboratory and hospital information systems, this laser cassette printer is perfectly compatible with our hinged tissue cassettes and able to print on cassettes with or without lids. Its structure possesses 6 cassette magazines holding up to 480 cassettes total. Choose from many printing options, including 1D as well as 2D barcoding, alphanumeric, graphic, and logo printing. On-demand mode printing, its high printing speed completes a cassette every 3 seconds.

Features:

- Laser tissue cassettes printer (ribbon or cartridge free printing)
- 6 cassette magazines hold up to 480 cassettes total, load 6 different color cassettes for efficient workflow
- Precision construction for jam-free cassette printing
- 1D and 2D barcodes, alphanumeric, graphic and logo printing
- Low work noise ≤65dB, meet the hospital pathology and labs environment requirement
- Integrate to LIS/HIS System
- Perfectly compatible with our hinged tissue cassettes
- High printing speed completes a cassette every 3 seconds
- Adapt to cassettes with lid or without lid, Sakura's cassettes.



Model No.	Description
EMR830	Laser Cassette Printer



Specifications:

Dimensions (L x W x H):	21 x 16 x 18in. (540 x 400 x 460 mm)
Weight:	88 lbs. (40 kg)
Power requirements:	AC, 90-240V, 50/60 Hz 350 Watts
Laser model:	Ultraviolet laser
Laser power:	1 Watt
Working temperature:	59°F ~ 86°F (15°C ~ 30°C)
Work noise:	≤ 65dB
Connectivity:	USB2.0
Cassette printing speed:	< 3 seconds per cassette (batch printing)
High resolution:	500 DPI
Number of hoppers :	6 clear hoppers for cassettes with or without lids
Cassette capacity per hopper:	80 cassettes per hopper
Total cassette capacity:	480 cassettes
Output tray capacity:	150 cassettes

Jinqun Medical's innovative laser printing technology creates the precise, clean edges and clear lines a barcode requires to produce a nearly perfect scan rate throughout the tracking process. The laser printing enable 500 DPI high-resolution and high-content 1D and 2D barcodes, alpha numeric, graphic and logo printing.

The printer is capable of printing tissue cassettes at a rate of 3 seconds per cassette. The design results in effective movement within the instrument that reduces jamming and produces optimal scan rates of nearly 100%. Hot foil tape, light bulbs, ink cartridges, print heads, and filters are not necessary for Tissue Cassette Laser Printer.

Six cassette magazines can hold up to 480 cassettes and the output tray can load 150 cassettes. Compatible with third-party cassettes.

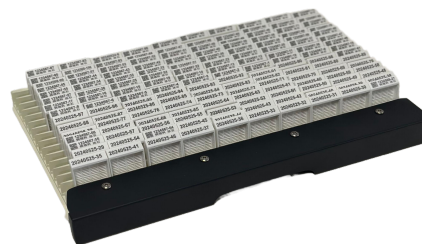
Features:

- Laser printing (ribbon or cartridges free), no extra consumable materials
- Patented-designed software system enable high-resolution and high-content 1D and 2D barcodes, alphanumeric, graphic and logo printing, can be integrated into HIS and LIS environment
- 500 DPI High Resolution printing, print is permanent and resistant to chemical degradation
- Precision construction for jam-free cassette printing
- Patented-designed cassettes per-load and load system for easy print reading and access
- Low work noise ≤65dB, meet the hospital pathology and labs environment requirement
- 6 hoppers allows for multiple cassette colors for efficient workflow
- Batch mode printing, high printing speed up to 20 cassettes per minute
- Can install scanner for instant scanning
- Compatible with third-party cassettes and design for large printing



Model No. Description

EMR560 UV Laser Cassette Printer



Specifications:

Dimensions (L x W x H):	21 x 16 x 18in. (540 x 400 x 460 mm)
Weight:	99 lbs. (45 kg)
Power requirements:	AC, 90-240V, 50/60 Hz 350 Watts
Laser model:	Ultraviolet laser
Laser power:	1 Watt
Working temperature:	59°F - 86°F (15°C - 30°C)
Work noise:	≤ 65dB
Connectivity:	USB2.0/USB3.0
Cassette printing speed:	< 3 seconds per cassette (batch printing)
High resolution:	500 DPI
Number of hoppers :	6 clear hoppers for cassettes with or without lids
Cassette capacity per hopper:	80 cassettes per hopper
Total cassette capacity:	480 cassettes
Output tray capacity:	150 cassettes

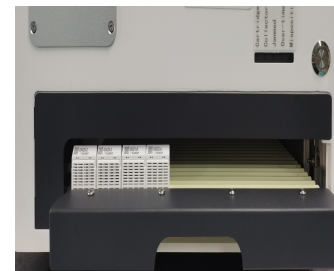
Jinqun Medical's innovative laser printing technology creates the precise, clean edges and clear lines a barcode requires to produce a nearly perfect scan rate throughout the tracking process. The laser printing enable 500 DPI high-resolution and high-content 1D and 2D barcodes, alpha numeric, graphic and logo printing.

The printer is capable of printing tissue cassettes at a rate of 3 seconds per cassette. The design results in effective movement within the instrument that reduces jamming and produces optimal scan rates of nearly 100%. Hot foil tape, light bulbs, ink cartridges, print heads, and filters are not necessary for Tissue Cassette Laser Printer.

Six cassette magazines can hold up to 480 cassettes and the output tray can load 150 cassettes. Compatible with third-party cassettes.

Features:

- Laser printing (ribbon or cartridges free), no extra consumable materials
- Patented-designed software system enable high-resolution and high-content 1D and 2D barcodes, alphanumeric, graphic and logo printing, can be integrated into HIS and LIS environment
- 500 DPI High Resolution printing, print is permanent and resistant to chemical degradation
- Precision construction for jam-free cassette printing
- Patented-designed cassettes per-load and load system for easy print reading and access
- Low work noise ≤65dB, meet the hospital pathology and labs environment requirement
- 6 hoppers allows for multiple cassette colors for efficient workflow
- Batch mode printing, high printing speed up to 20 cassettes per minute
- Can install scanner for instant scanning
- Compatible with third-party cassettes and design for large printing



Model No.	Description
EMR560P	UV Laser Cassette Printer



Specifications:

Dimensions (L x W x H):	19 x 13 x 16in.(490 x 330 x 406mm)
Weight:	99lbs.(45 kg)
Power requirements:	AC,90-240V, 50/60 Hz, 350 Watts
Laser model:	Ultraviolet laser
Laser power:	1 Watt
Working temperature:	59°F ~ 86°F (15°C ~ 30°C)
Work noise:	≤65dB
Connectivity:	USB2.0
Cassette printing speed:	< 3 seconds per cassette (on-demand printing)
High resolution:	500 DPI
Number of hoppers :	4 hoppers for one piece tissue cassette
Cassette capacity per hopper:	80 cassettes per hoppers
Total cassette capacity:	320 cassettes
Output tray capacity:	7 cassettes

Guangdong Jinqun Medical tissue cassette laser printer is a must-have for pathology and lab environments. Precision construction forges jam-free printing while its low work noise ≤65dB design offers ribbon or cartridge-free printing, optimal for cost-efficient workflows.

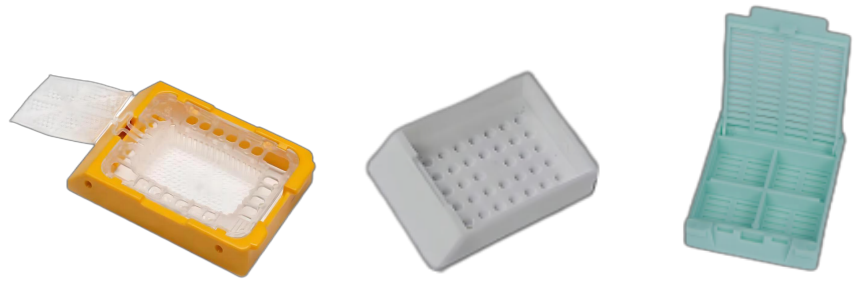
Easily integrated into laboratory and hospital information systems, this laser cassette printer is perfectly compatible with our hinged tissue cassettes and able to print on cassettes with or without lids. Its structure possesses 4 cassette magazines holding up to 320 cassettes total. Choose from many printing options, including 1D as well as 2D barcoding, alphanumeric, graphic, and logo printing. On-demand mode printing, its high printing speed completes a cassette every 3 seconds.

Features:

- Laser tissue cassettes printer (ribbon or cartridge free printing)
- 4 cassette magazines hold up to 320 cassettes total, load 4 different color cassettes for efficient workflow
- Precision construction for jam-free cassette printing
- 1D and 2D barcodes, alphanumeric, graphic and logo printing
- Low work noise ≤65dB, meet the hospital pathology and labs environment requirement
- Integrate to LIS/HIS System
- Perfectly compatible with our hinged tissue cassettes
- High printing speed completes a cassette every 3 seconds



Model No.	Description
EMR840	Laser Cassette Printer



Specifications:

Dimensions (L x W x H):	20 x 14 x 17in. (500 x 350 x 435mm)
Weight:	66lbs.(30 kg)
Power requirements:	AC,90-240V, 50/60 Hz, 350 Watts
Laser model:	Ultraviolet laser
Laser power:	1 Watt
Working temperature:	59°F ~ 86°F (15°C ~ 30°C)
Work noise:	≤65dB
Connectivity:	USB2.0
Cassette printing speed:	< 2.5 seconds per cassette (on-demand printing&batch printing)
High resolution:	500 DPI
Number of hoppers :	6 hoppers for cassettes with or without lids
Cassette capacity per hopper:	80 cassettes per hoppers
Total cassette capacity:	480 cassettes
Output tray capacity:	150 cassettes

Guangdong Jinqun Medical tissue cassette laser printer is a must-have for pathology and lab environments. Precision construction forges jam-free printing while its low work noise ≤65dB design offers ribbon or cartridge-free printing, optimal for cost-efficient workflows. Easily integrated into laboratory and hospital information systems.

Features:

- Can print several barcode types such as: Data Matrix, QR code, Code 128, upon the user selection.
- To select at each hopper the desired cassette color.
- To create folders with the printing job list in order to recover each list when desired, in order to program and organize the lab priorities at the most efficient and productive way.
- To print on demand even a single cassette and in addition to print batch a volume of cassettes.
- To create selective 1D or 2D barcodes of its own choice up to 100 characters each.
- To create different fonts with different sizes.
- To enter sample cases when an external barcode reader will be connected in order to enter a new printing joblist.
- To achieve language switch function.
- To export the printed list in Excel file and import the slide printer directly.
- Adapt to cassettes with lid or without lid, Sakura's cassettes.



Model No.	Description
EMR8600	Laser Cassette Printer



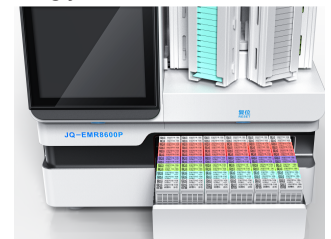
Specifications:

Dimensions (L x W x H):	20 x 14 x 17in. (500 x 350 x 435mm)
Weight:	66lbs.(30 kg)
Power requirements:	AC,90-240V, 50/60 Hz, 350 Watts
Laser model:	Ultraviolet laser
Laser power:	1 Watt
Working temperature:	59°F ~ 86°F (15°C ~ 30°C)
Work noise:	≤65dB
Connectivity:	USB2.0/USB3.0
Cassette printing speed:	< 2.5 seconds per cassette (on-demand printing&batch printing)
High resolution:	500 DPI
Number of hoppers :	6 hoppers for cassettes with or without lids
Cassette capacity per hopper:	80 cassettes per hoppers
Total cassette capacity:	480 cassettes
Output tray capacity:	150 cassettes

Guangdong Jinqun Medical tissue cassette laser printer is a must-have for pathology and lab environments. Precision construction forges jam-free printing while its low work noise ≤65dB design offers ribbon or cartridge-free printing, optimal for cost-efficient workflows. Easily integrated into laboratory and hospital information systems.

Features:

- Can print several barcode types such as: Data Matrix, QR code, Code 128, upon the user selection.
- To select at each hopper the desired cassette color.
- To create folders with the printing job list in order to recover each list when desired, in order to program and organize the lab priorities at the most efficient and productive way.
- To print on demand even a single cassette and in addition to print batch a volume of cassettes.
- To create selective 1D or 2D barcodes of its own choice up to 100 characters each.
- To create different fonts with different sizes.
- To enter sample cases when an external barcode reader will be connected in order to enter a new printing joblist.
- To achieve language switch function.
- To connect external computer.
- To export the printed list in Excel file and import the slide printer directly.
- Adapt to cassettes with lid or without lid, Sakura's cassettes.



Model No.	Description
EMR8600P	Laser Cassette Printer